



气动夹爪 B32 Pneumatic grippers B32

主要特点:

- 钢制壳体
- 夹紧位置不可逆
- 钢制夹臂 A 型和 B 型
- 4 种固定板
- 气缸缸径 32 mm
- 2 个 G1/8" 气源接口
- 电感式接近开关带 3 个 led (接口 M12x1)



Main characteristics:

- Steel body
- Irreversibility of clamping position
- Steel arms type A e B
- 4 type of fixing plates
- Pneumatic cylinder bore 32 mm
- 2 feeding ports G1/8"
- Inductive proximity switch 3 leds (connection M12x1)



[PDF](#)



[3D Step](#)



[Index](#)

**索引.
Index.**

| 页码 Page | 描述 Description | |
|------------|-----------------------------------------------------------------------------|------------------------|
| 1 | 主要特点 Main characteristics | |
| 2 | 订货举例 Ordering example | |
| 3 | 尺寸页码 Dimensional page | B32-AX... |
| 4 | | B32-A1... |
| 5 | | B32-A2... |
| 6 | | B32-BX... |
| 6 | | B32-B1... B32-B2... |
| 7-9 | 固定板类型 Type of fixing plates | |
| 10 | 图表 / 耗气量 Diagrams / Air consumption | |
| 11 | 电感式接近开关示意图 / 气路图 Diagram for inductive proximity switch / Pneumatic plan | |
| 12 | 备件 / Spare parts | |
| 13 | 备注 / Notes | |



订货举例.

Ordering example.

B32 - A1 - S4 - PL - A - 45 - A - A

产品型号和气缸缸径:
Model and cylinder bore:
B32
B 型夹爪 (缸径 32 mm)
gripper B (cylinder bore 32 mm)



打开角度:
Opening angle:

| | | | |
|------|-------|-----|------|
| B32A | 22,5° | 45° | 80° |
| B32B | 45° | 90° | 160° |

夹臂和压块类型:
Type of arms and blocks:

AX: 单夹臂无压块
single arm without block

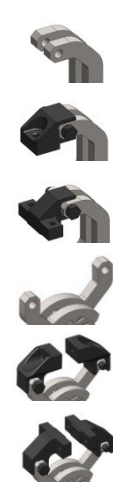
A1: 单夹臂带单压块
single arm with single block

A2: 单夹臂带双压块
single arm with double block

BX: 双夹臂无压块
double arms without blocks

B1: 双夹臂单压块
double arms with single blocks

B2: 双夹臂带双压块
double arms with double blocks



请注意: 其它相关信息请参考尺寸页码.
NOTE: for other information see dimensional pages.

电感式接近开关类型:
Type of proximity-switch:

A: P+F 标准接近开关
standard proximity-switch P+F


B: P+F 接近开关带 白色 LED
(保时捷 Porsche 规格)
proximity-switch P+F with white LED (Porsche normative)

请注意: 其它相关信息请参考第 11 页.
NOTE: for other information see page 11.

固定销类型:
Type of lock-pins:

X: 无固定销
without pin

A: M6 销钉带滚花头
pins M6 with hexagonal knurled head

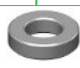


垫片厚度:
Thickness washer:

SX: 不带垫片 (一般用于 “B” 型夹臂)
without washer (always for type “B” arms)

S4: 标准垫片厚度 4 mm;
standard washer of 4 mm of thickness;

请注意: 请用 S1, S2, S3, S4, S5, S6 代表 1mm 到 6 mm 的所需垫片厚度..
NOTE: possibility to demand a thickness washer from 1 mm to 6 mm putting S1, S2, S3, S4, S5, S6.



电感式接近开关位置:
Inductive proximity-switch position:

PX: 无接近开关
without proximity-switch

PL: P+F 接近开关在左侧
proximity-switch P+F on left side

PR: P+F 接近开关在右侧
proximity-switch P+F on right side



请注意: 气源接口位置和接近开关在同侧.
NOTE: the feeding ports position is always the same of proximity-switch one.


固定板类型:
Type of fixing plates:

A: 标准固定板
standard fixing plate

B30: 固定板带 Ø30 mm 球头
fixing plate with ball joint Ø30 mm

B40: 固定板带 Ø40 mm 球头
fixing plate with ball joint Ø40 mm

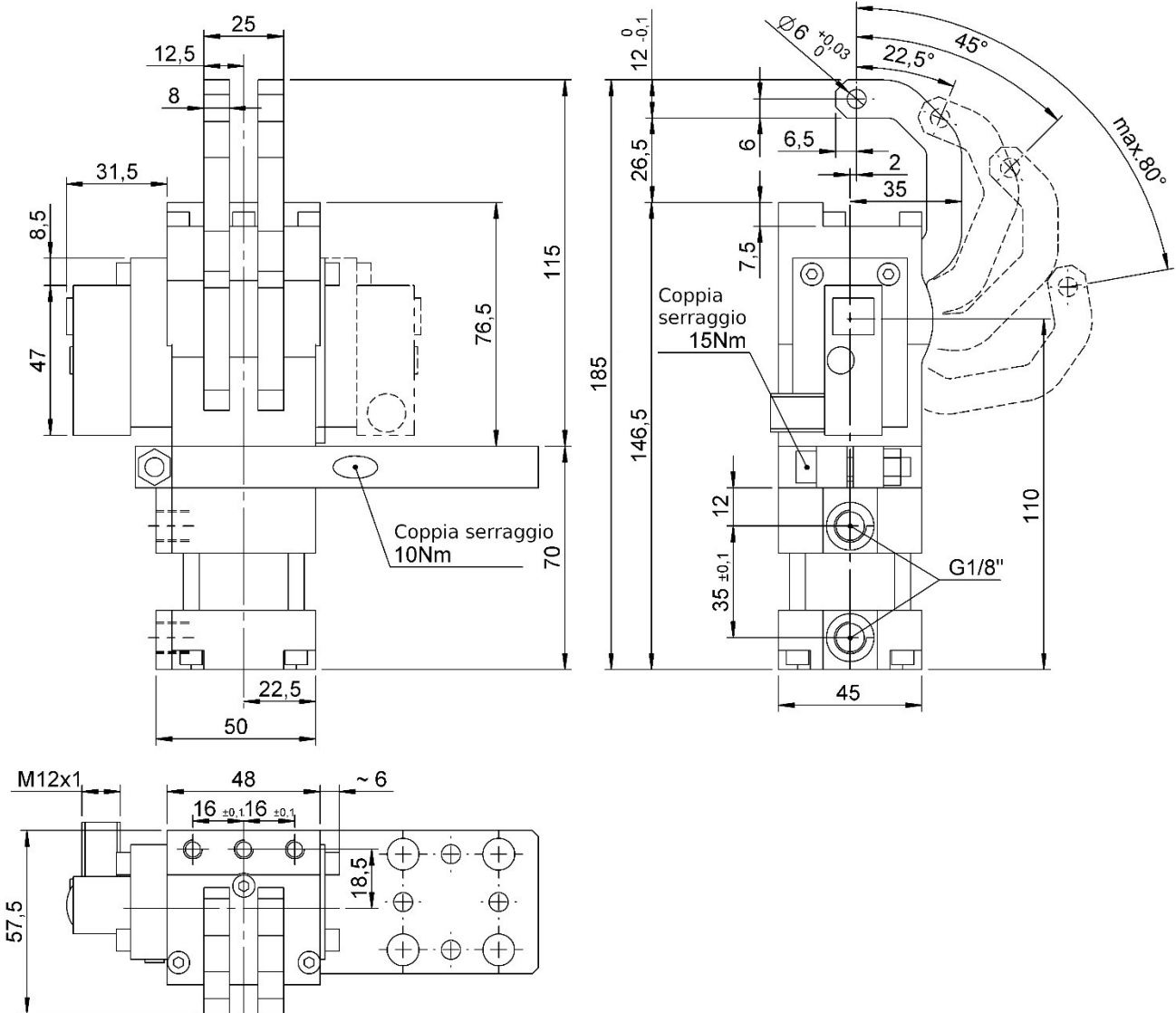
C: 底部固定板
lower fixing plate



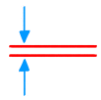


B32-AX...

气动夹爪 D. 32, 单夹臂, 无固定销, 标准固定板
Gripper D. 32, single arm, no pin, standard fixing plate

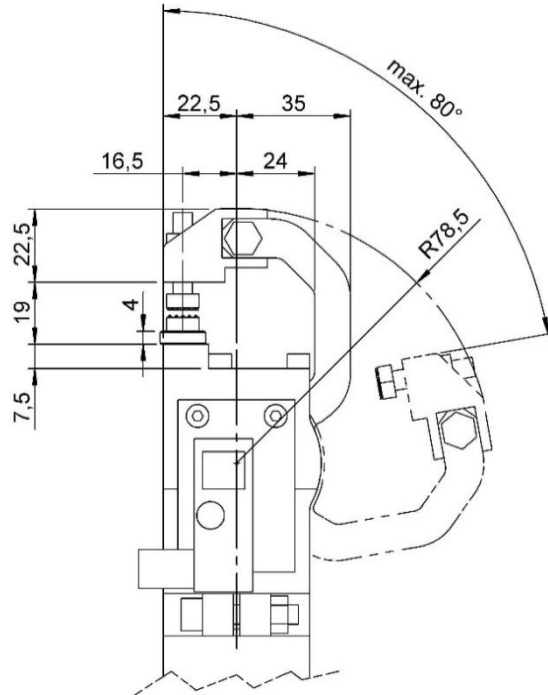
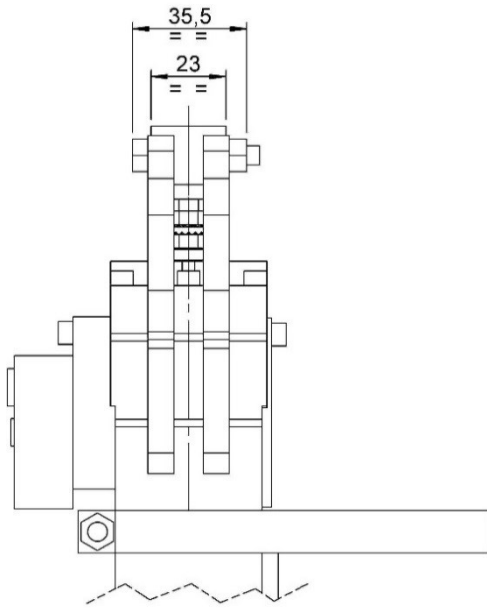


| 类型 Type | 缸径 Cylinder bore | 夹紧扭矩 (5 bar) Clamping force (5 bar) | 重量 Weight | 工作气压 Working pressure | 打开角度 Opening angle |
|------------|---------------------|----------------------------------------------|--------------|--------------------------|-----------------------|
| | [mm] | [N] | [Kg] | [bar] | [°] |
| B32-AX... | 32 | 850 | ~ 1,4 | 4 - 8 | 22,5° - 45° - 80° |



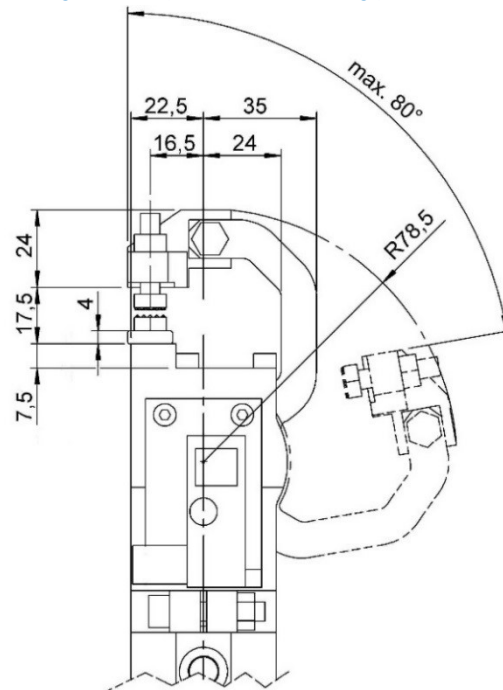
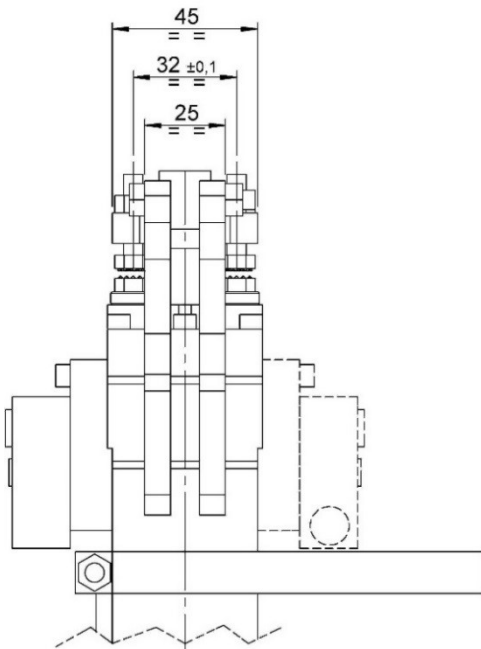
B32-A1...

气动夹爪 D. 32, 单夹臂, 1 个固定销, 标准固定板
Gripper D. 32, single arm, 1 pin, standard fixing plate

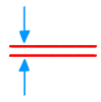


B32-A2...

气动夹爪 D. 32, 单夹臂, 2 个固定销, 标准固定板
Gripper D. 32, single arm, 2 pins, standard fixing plate

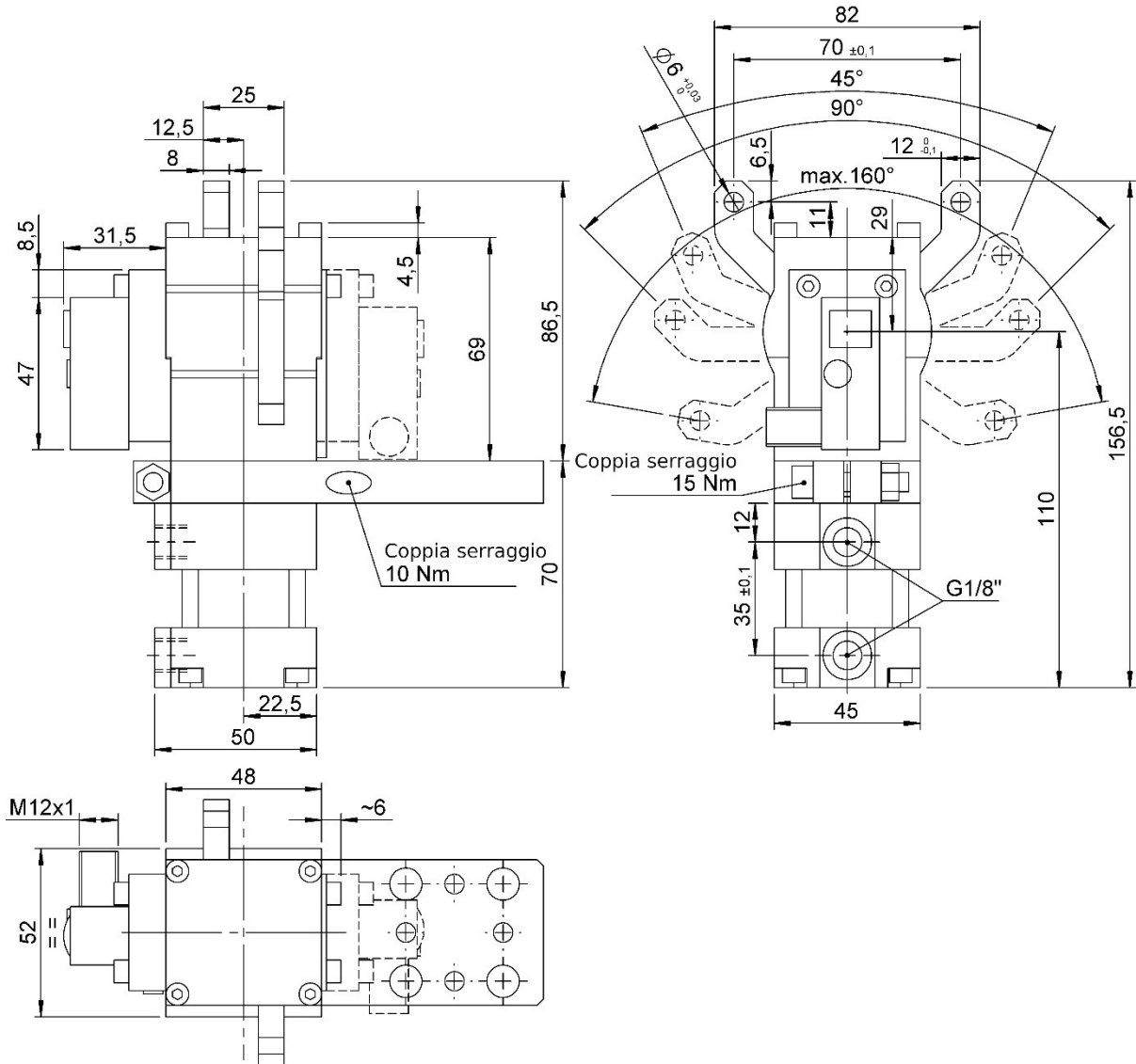


| 类型 Type | 缸径 Cylinder bore | 夹紧扭矩 (5 bar) Clamping force (5 bar) | 重量 Weight | 工作气压 Working pressure | 打开角度 Opening angle |
|------------|---------------------|----------------------------------------------|--------------|--------------------------|-----------------------|
| | [mm] | [N] | [Kg] | [bar] | [°] |
| B32-A... | 32 | 850 | ~ 1,4 | 4 - 8 | 22,5° - 45° - 80° |

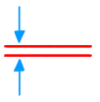


B32-BX...

气动夹爪 D. 32, 双夹臂, 无固定销, 标准固定板
Gripper D. 32, double arm, no pin, standard fixing plate

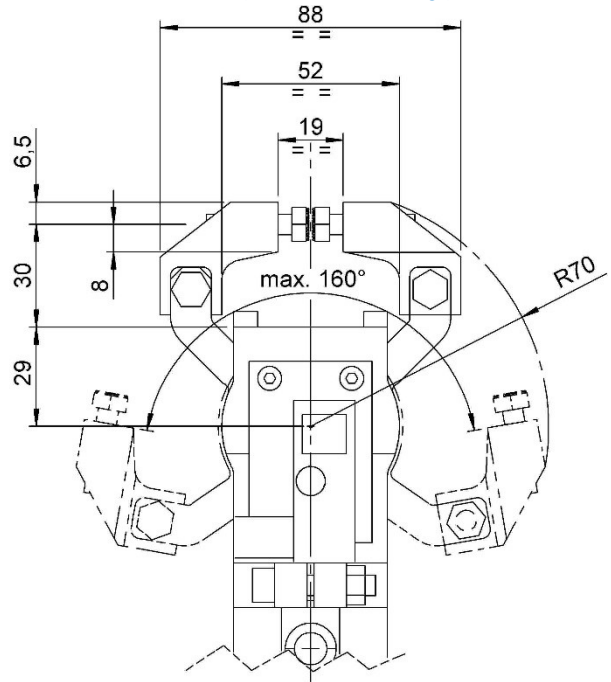
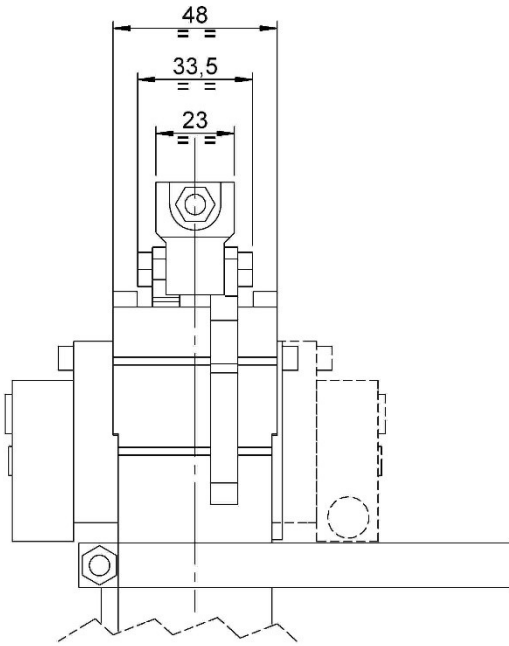


| 类型 Type | 缸径 Cylinder bore | 夹紧扭矩 (5 bar) Clamping force (5 bar) | 重量 Weight | 工作气压 Working pressure | 打开角度 Opening angle |
|------------|---------------------|----------------------------------------------|--------------|--------------------------|-----------------------|
| | [mm] | [N] | [Kg] | [bar] | [°] |
| B32-BX... | 32 | 250 | ~ 1,3 | 4 - 8 | 45° - 90° - 160° |



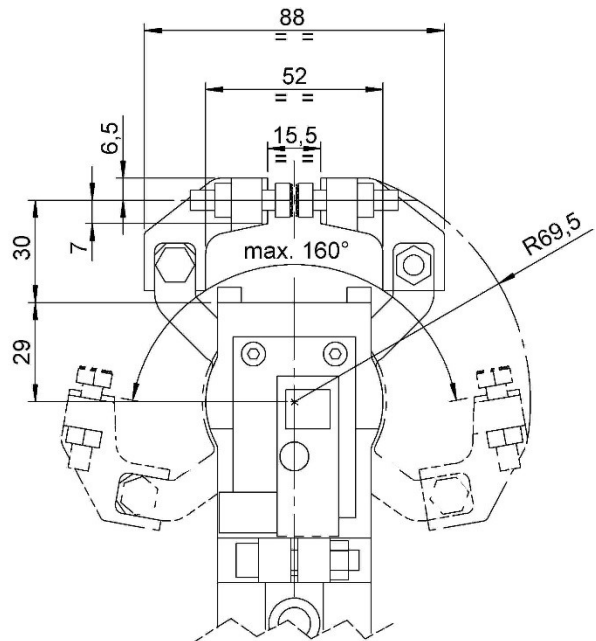
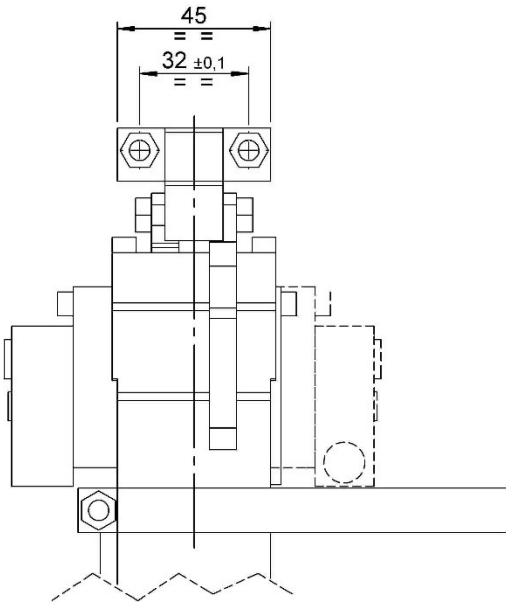
B32-B1...

气动夹爪 D. 32, 双夹臂, 1 个固定销, 标准固定板
Gripper D. 32, double arm, 1 pin, standard fixing plate

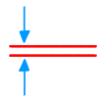


B32-B2...

气动夹爪 D. 32, 双夹臂, 2 个固定销, 标准固定板
Gripper D. 32, double arm, 2 pins, standard fixing plate



| 类型 Type | 缸径 Cylinder bore | 夹紧扭矩 (5 bar) Clamping force (5 bar) | 重量 Weight | 工作气压 Working pressure | 打开角度 Opening angle |
|------------|---------------------|----------------------------------------------|--------------|--------------------------|-----------------------|
| | [mm] | [N] | [Kg] | [bar] | [°] |
| B32-B... | 32 | 250 | ~ 1,5 | 4 - 8 | 45° - 90° - 160° |

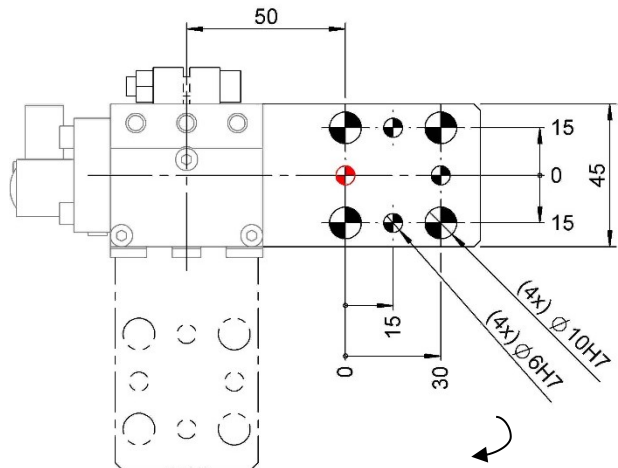
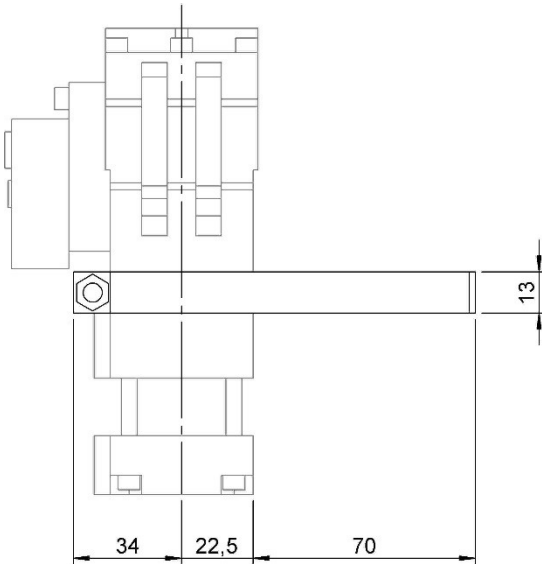


固定板种类.

Type of fixing plates.

B32.....-A

A 型固定板 (标准)
Plate type A (standard)



固定板可以 360° 旋转

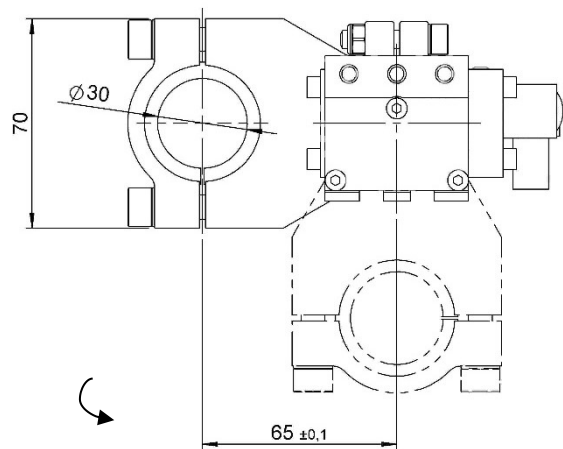
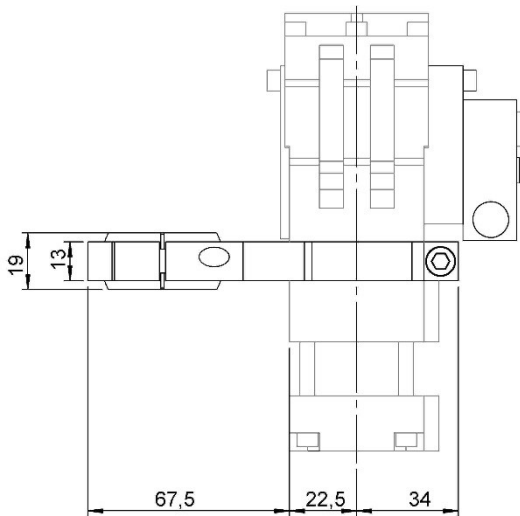
Possibility to rotate the plate of 360

公差: 定位销孔 ± 0.02 , 螺纹孔: ± 0.1

Tolerances: dowel holes ± 0.02 , screw holes ± 0.1

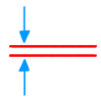
B32.....-B30

B30 型固定板
Plate type B30



固定板可以 360° 旋转

Possibility to rotate the plate of 360

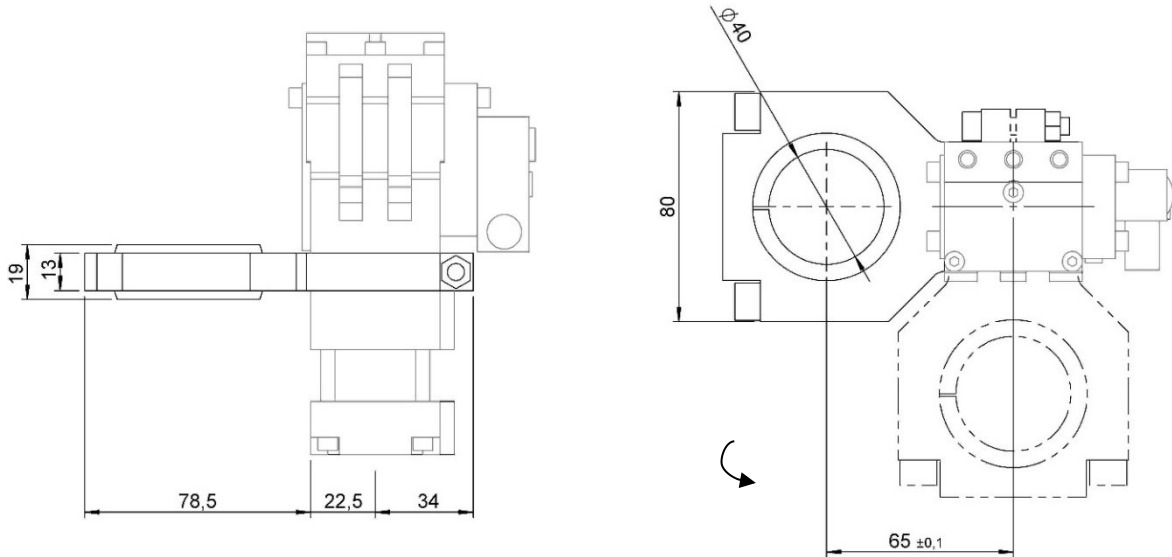


固定板类型.

Type of fixing plates.

B32.....-B40

B40 型固定板
Plate type B40

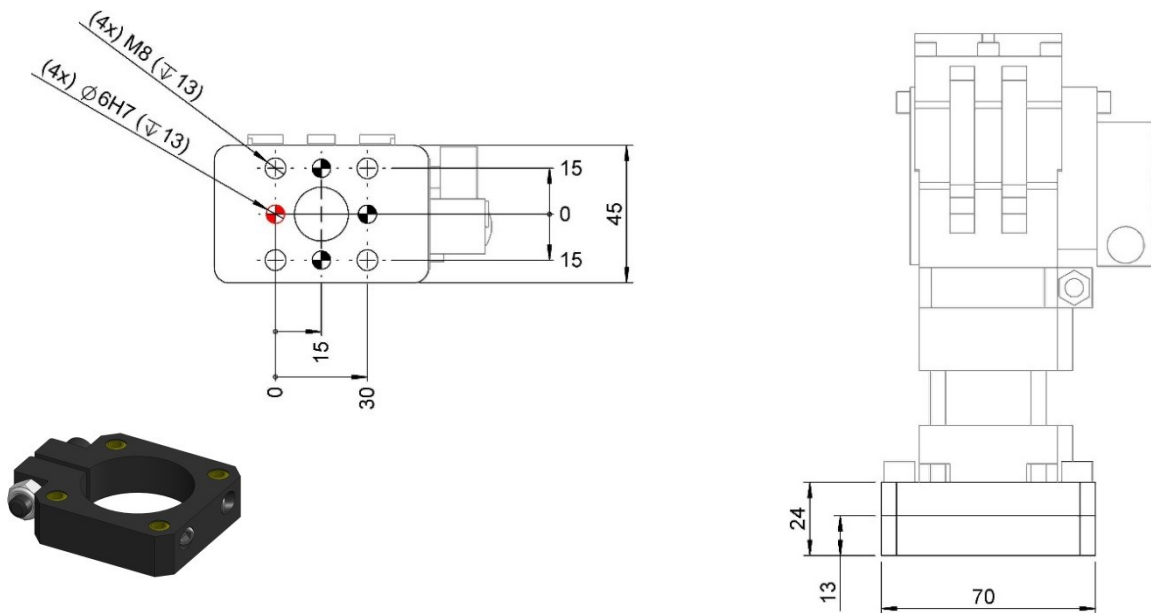


固定板可以 360° 旋转

Possibility to rotate the plate of 360

B32.....-C

C* 型固定板
Plate type C*



公差: 定位销孔 ± 0.02 , 螺纹孔: ± 0.1

Tolerances: dowel holes ± 0.02 , screw holes ± 0.1

* 连接 C 型固定板，需要在缸体和夹爪之间安装一个过渡隔板。

订货号为 **06785/C**

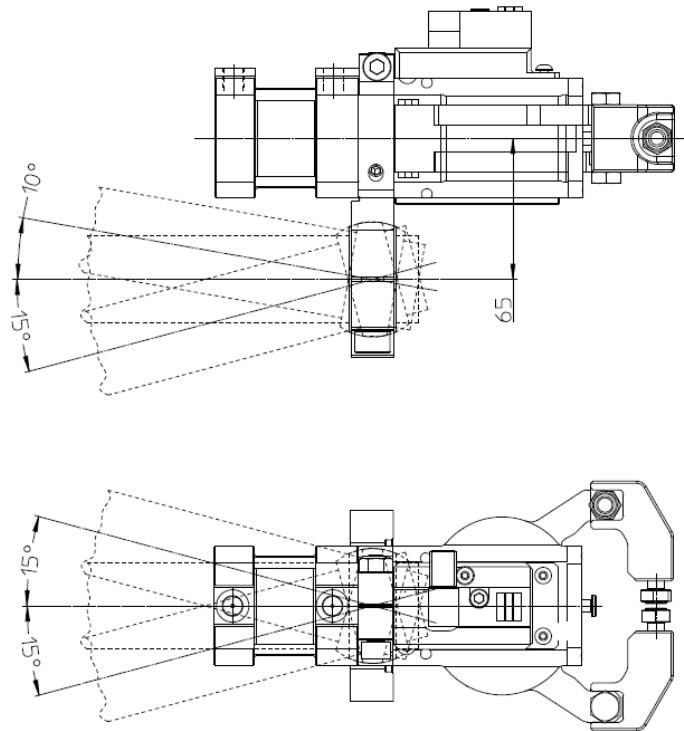
* To mount the fixing type C, it's necessary to mount a plate/spacer between the cylinder and the gripper.

Order code **06785/C**



以下是上述带球头连接固定板的最大倾角 (B30, B40).

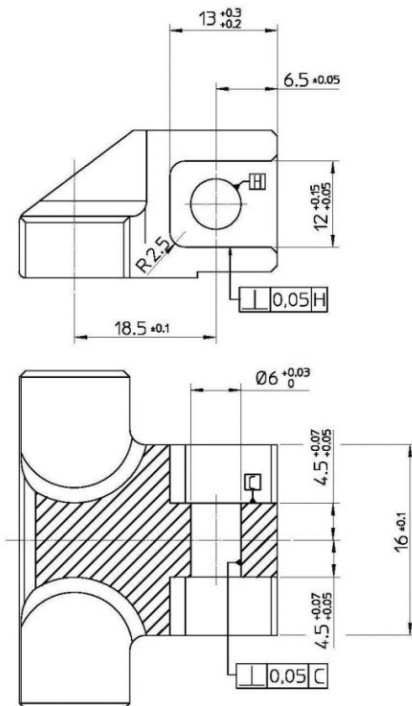
Describe below the maximum inclinations that can obtain with the use of mounts with ball joint described previously (B30, B40).



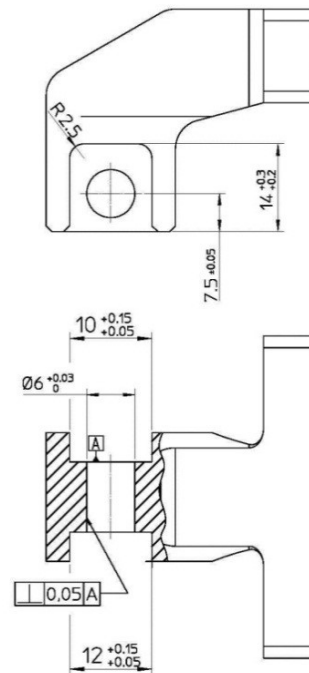
根据需求可以提供特殊压块，或者根据以下公差和尺寸定制压块。

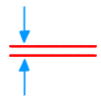
On request they are available special bloks or they can be built respecting the dimensions with it's tolerances.

A 型
Type A



B 型
Type B



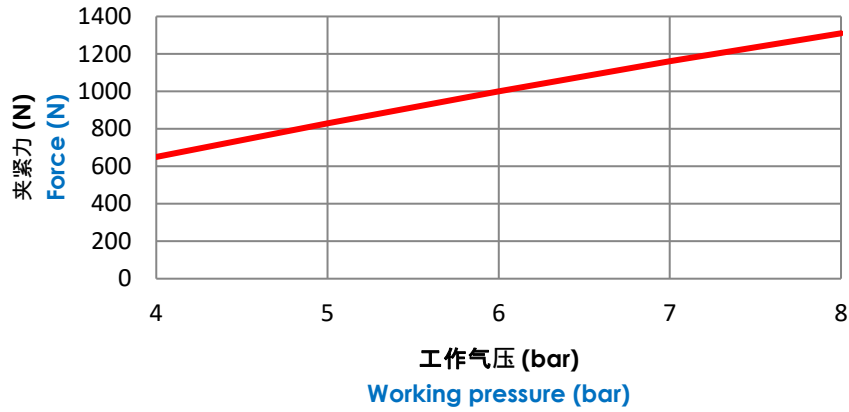


图表.

Diagrams.

B32A 夹紧力曲线图.

Force diagram B32A.



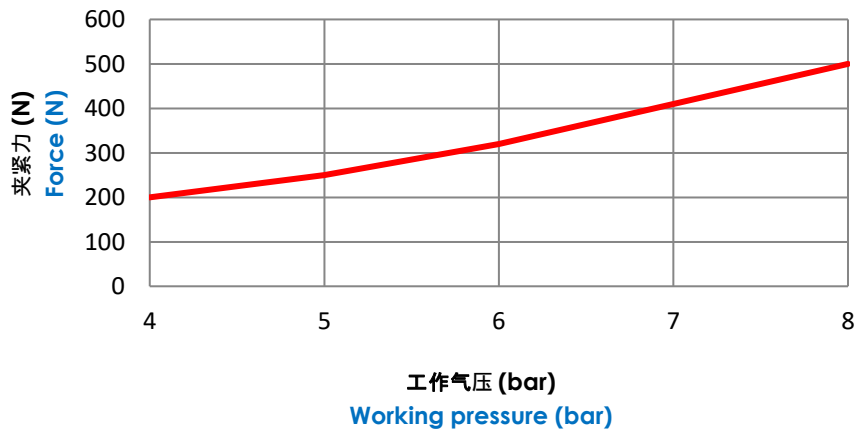
耗气量.

Air consumption.

| 工作气压 Working pressure [bar] | 打开角度 Opening angle [°] | 耗气量/周期 Air consumption/cycle [l] |
|-------------------------------------|--------------------------------|------------------------------------------|
| 5 | 22,5° | 0,10 |
| | 45° | 0,12 |
| | 80° | 0,16 |

B32B 夹紧力曲线图.

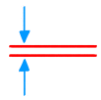
Force diagram B32B.



耗气量.

Air consumption

| 工作气压 Working pressure [bar] | 打开角度 Opening angle [°] | 耗气量/周期 Air consumption/cycle [l] |
|-------------------------------------|--------------------------------|------------------------------------------|
| 5 | 45° | 0,10 |
| | 90° | 0,12 |
| | 160° | 0,16 |



电感式接近开关示意图.

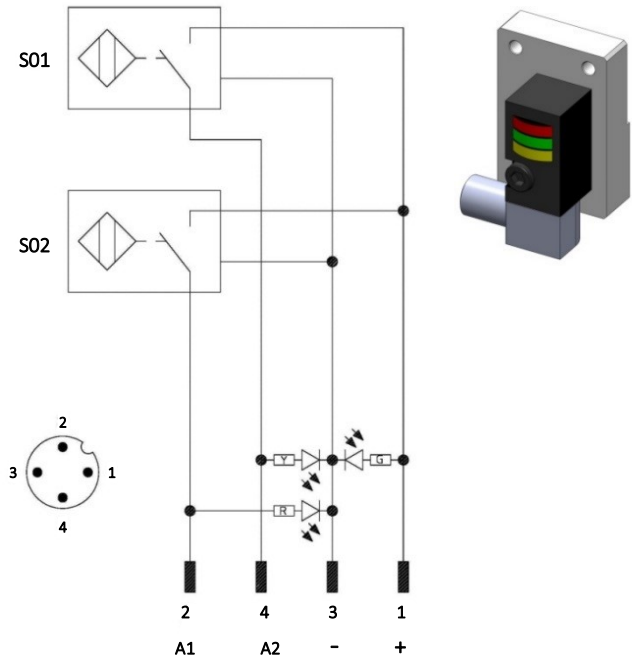
Diagram for Inductive proximity switch.

技术参数 (P+F):

- 输出类型: PNP;
- 输入电压: 10-30 VDC;
- 最大换向电流: 200 mA;
- 耗电电流: < 25 mA;
- 电压差: <2 V
- 工作温度: -25° / 70° C.

Technical data (P+F):

- Output type: PNP;
- Feeding voltage: 10-30 VDC;
- Max. commutating current: 200 mA;
- Power supply: < 25 mA;
- Voltage drop: < 2 V;
- Temperature range: -25° / 70° C.



- cod. 06692/R/C** 标准接近开关带红色 LED
- cod. 06692/W/C** 接近开关带白色 LED (保时捷 Porsche 规格)
- cod. 06692/R/C** for standard proximity-switch with red LED
- cod. 06692/W/C** for proximity-switch with white LED (Porsche normative)

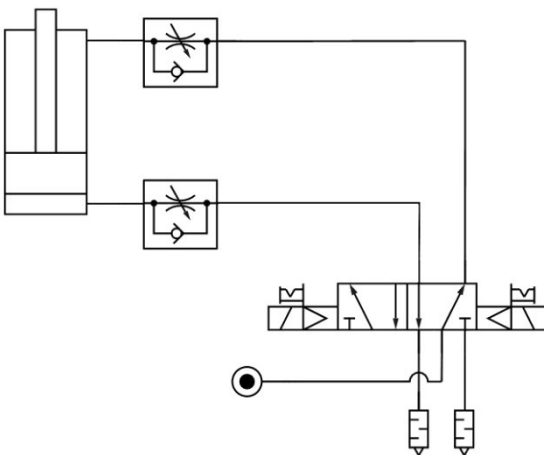
- S01 = 打开信号
- S01 = opening signal
- S02 = 关闭信号
- S02 = closing signal

- Y = 黄色 LED / yellow LED
- G = 绿色 LED / green LED
- R = 红色 LED / red LED

- 1 = 棕色线 / brown wire
- 2 = 黑色线 / black wire
- 3 = 蓝色线 / blue wire
- 4 = 白色线 / white wire

气路图.

Pneumatic plan.



| | | | | | | | | |
|---------------------------------|---------------------|--|--|--|--|--|--|--|
| 气缸 pneumatic cylinder | 关闭位置 closed pos. | | | | | | | |
| | 打开位置 open pos. | | | | | | | |
| 打开位置信号 open pos. signal | 1 | | | | | | | |
| | 0 | | | | | | | |
| 关闭位置信号 closed pos. signal | 1 | | | | | | | |
| | 0 | | | | | | | |



备件.

Spare parts.

| 配套元件 # Kit | 图片 Picture | 描述 Description | 代号 Article | |
|--------------------------|---------------|----------------------------------------------------------------------------------------------------------------------------------------------------------|----------------|------------|
| 压块 Blocks | | A1 型压块 Block type A1 | 06735/C | |
| | | A2 型压块 Block type A2 | 06736/C | |
| | | B1 型压块 Block type B1 | 06718/C | |
| | | B2 型压块 Block type B2 | 06678/C | |
| 锁紧螺钉 Lock-pins | | M6x1x30 六角滚花头螺钉 + 螺母 Pin with hexagonal knurled head M6x1x30 + nut | 3/105/C | |
| | | M6x1.25x10 六角滚花头螺钉 Pin with hexagonal knurled head M6x1.25x10 | 3/109 | |
| | | B32A 锁紧螺钉套件 (1 个 M6x1.25x30 六角滚花头螺钉, 1 个 M6x1x10 六角滚花头螺钉, 1 个 M6 螺母) B32A pins kit (1 pin M6x1.25x30, 1 pin M6x1x10, 1 nut M6) | A-PBA | |
| | | B32B 锁紧螺钉套件 (2 个 M6x1x30 六角滚花头螺钉, 2 个 M6 螺母) B32B pins kit (2 pin M6x1x30, 2 nuts M6) | B-PBA | |
| 固定板 Fixing plates | | A 型标准固定板 Standard fixing plate type A | 06720/C | |
| | | B30 型 Ø30 mm 球头固定板 Fixing plate with ball joint Ø30 mm type B30 | 06832/30/C | |
| | | B40 型 Ø40 mm 球头固定板 Fixing plate with ball joint Ø40 mm type B40 | 06831/40/C | |
| | | C 型底部固定板 Lower fixing plate type C | 06913/C | |
| | | C 型隔板 Spacer plate for type C | 06785/C | |
| 接近开关 Proximity switch | | 标准 P+F 接近开关 (带红色 LED) Standard proximity switch P+F (with red LED) | 06692/R/C | |
| | | 标准 P+F 接近开关 (带白色 LED) 保时捷 Porsche 规格 Standard proximity switch P+F (with white LED) Porsche normative | 06692/W/C | |
| 密封圈套装 Seals kit | | 缸径 32 mm 气缸密封圈组件 Seal components for pneumatic cylinder bore 32 mm | SCR-CILB32 | |
| 调整垫片 Spacer | | 调节打开角度用垫片 Spacer for opening angle adjustment | B32-A... 22.5° | 06719/45/C |
| | | | B32-B... 45° | |
| | | | B32-A... 45° | 06719/90/C |
| | | | B32-B... 90° | |

